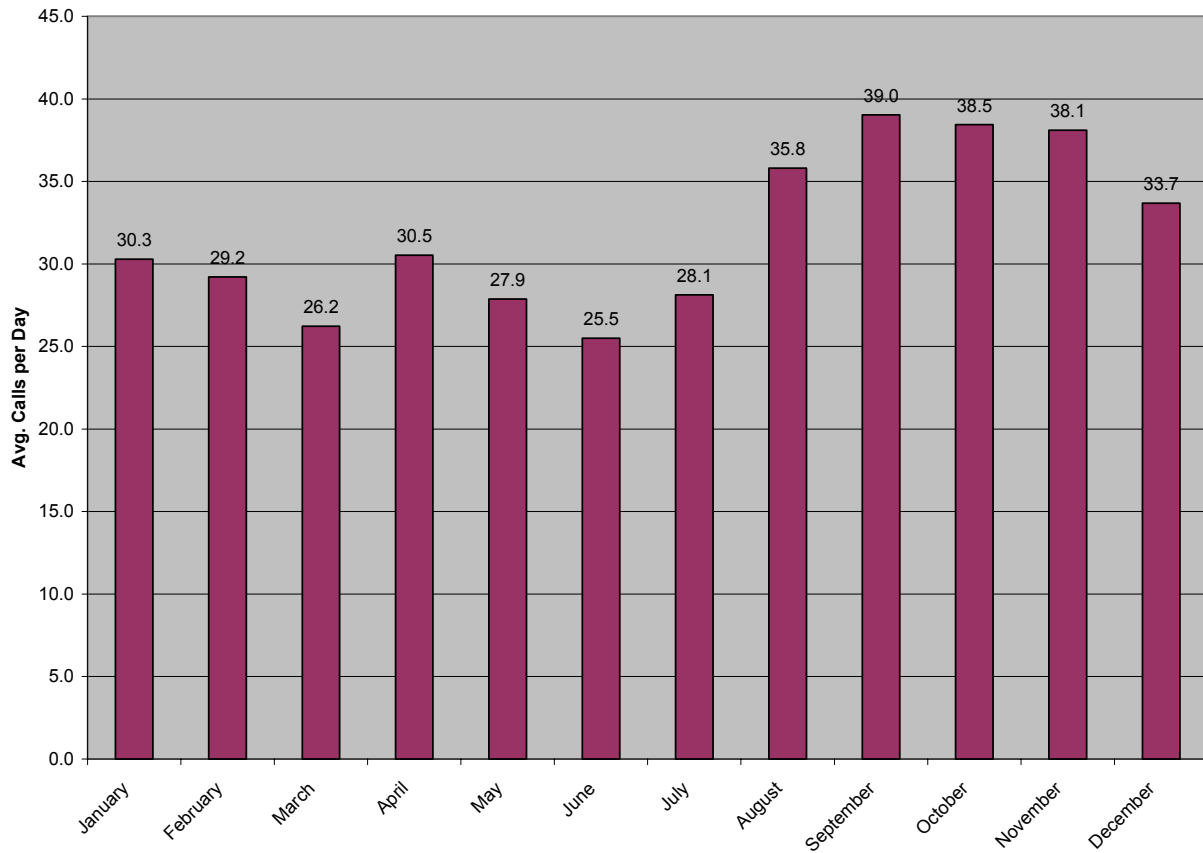
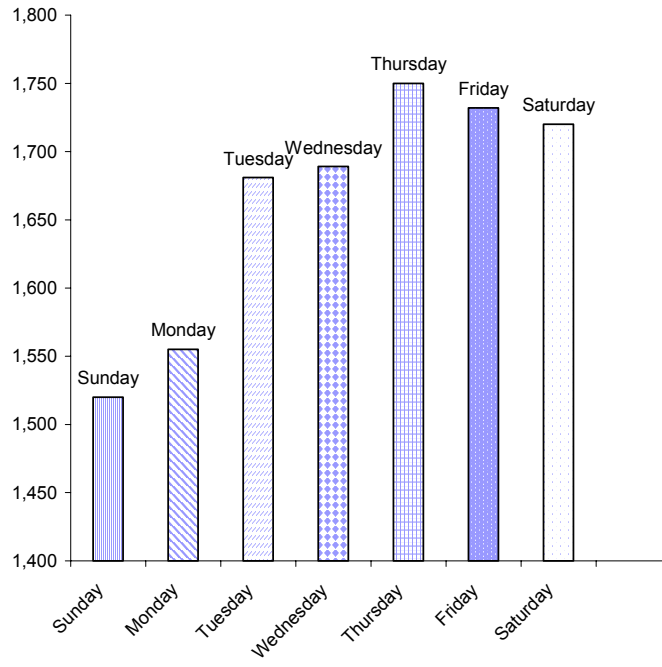


2002 Listening Ear Statistics
provided by Rick H, Statistician

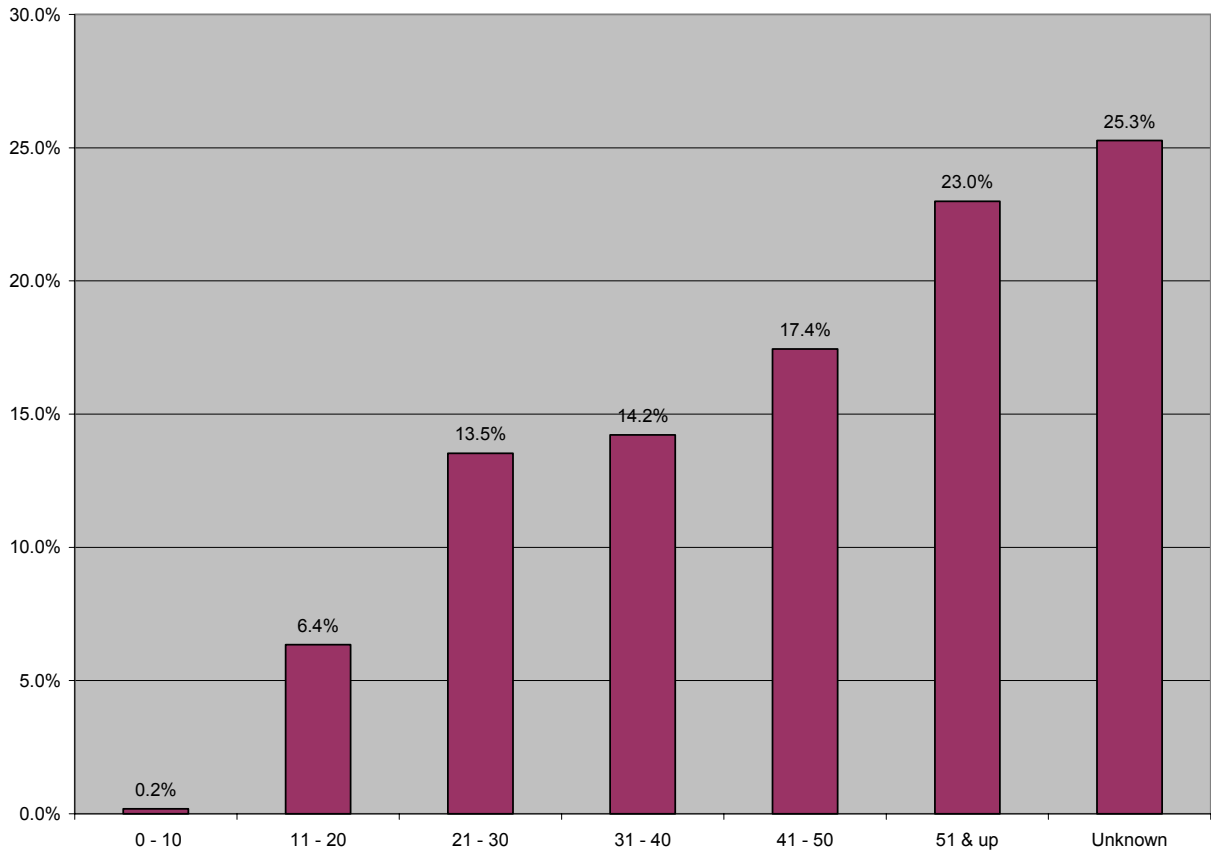
Seasonal Distribution of Calls



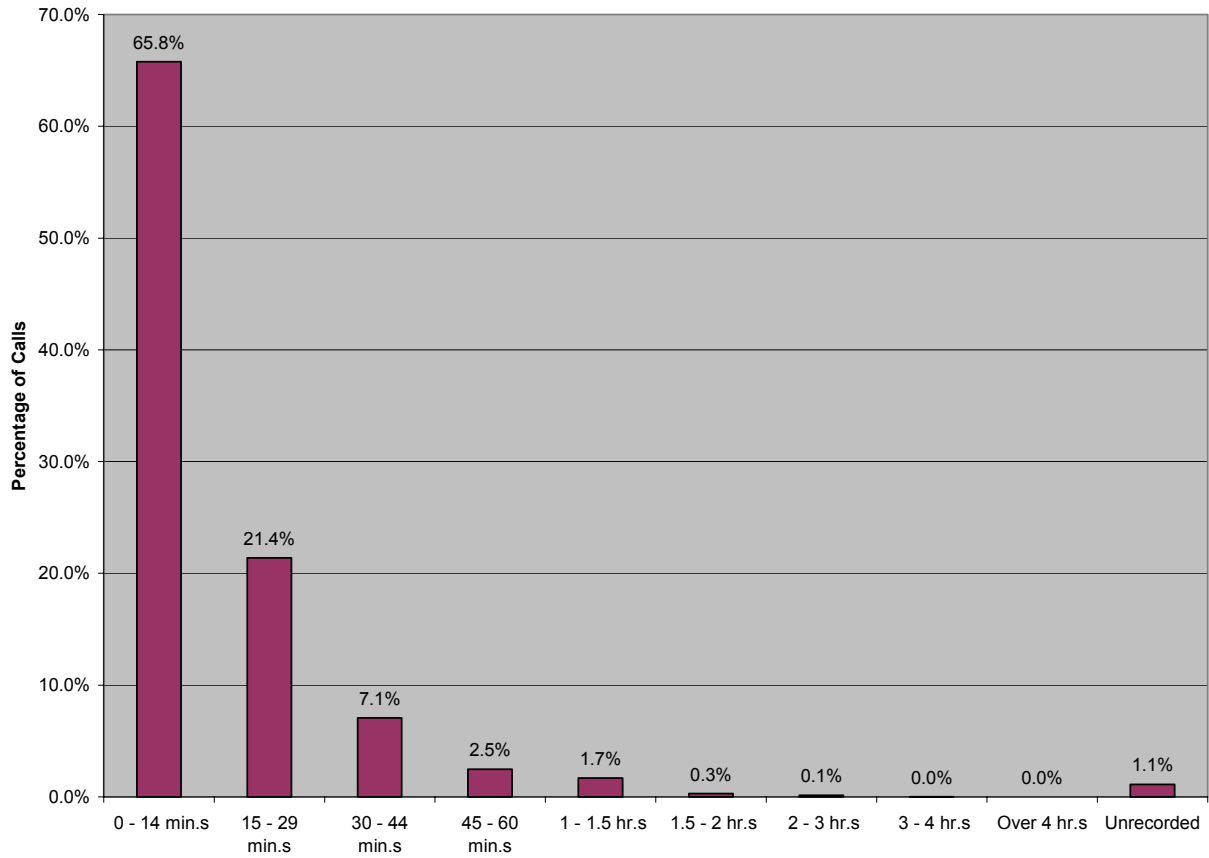
Weekly Distribution of Calls



Age Distribution of Callers



Length Distribution of Calls



Other Information:

Gender:

Don't know	194	1.7%
Male	6,071	52.1%
Female	5,351	45.9%
Group	30	0.3%

Student:

Don't know	4,264	36.6%
Not	6,344	54.5%
K - 12	135	1.2%
MSU	536	4.6%
LCC	79	0.7%
Other	284	2.4%

Total Contacts: 11,647
Average: 1 call every 45 minutes